



ADATTO ALU

wall formwork

▼ Panels size

Standard Panels

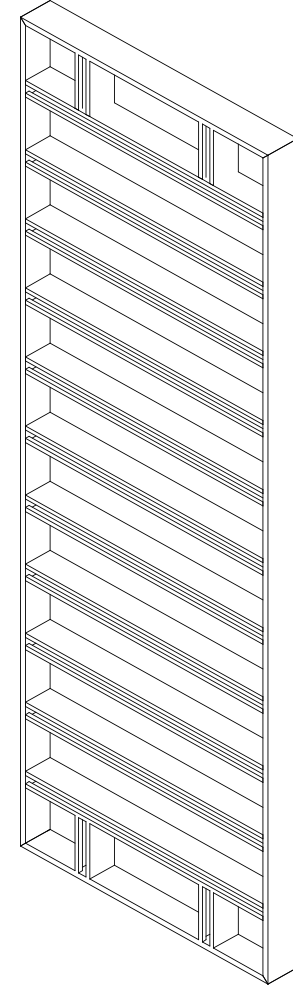
Width (cm): 100/75/60/50/40/30/20

Height (cm): 300/270/150/75

Universal Column/Panels

Width (cm): 100/75

Height (cm): 300/270/150/75



▼ Profile thickness

Height= 120mm

Thickness= 20mm

▼ Aluminium frame

Perimeter frame with central crosspieces entirely in aluminium.

▼ Maximum casting pressure: 60 kN/m²

Fresh concrete casting pressure according to DIN 18218 complying with the flatness tolerances according to DIN 18202 (table 3 line 7).

▼ Panels weight

Panels of 23 Kg/sqm.

▼ Plywood

Thickness= 18mm - 12,6 Kg/m²

Multilayer Finnish panel with a 220/220 g/sq.m. phenolic coating 220/220 g/m².

▼ Tie rods

DW15 - n.3 tie rods.

▼ Connection Clamps (vertical/horizontal)

Cod. 19031 Fixed Clamp

Cod. 19080 Adjustable clamp (max 13cm)

Cod. 19061 Adjustable clamp (max 26cm)

▼ Service brackets

Brackets cm 75

Working load 150Kg/sq.m. for centre distance 1.50m

▼ Flatness tolerance

According to DIN 18202.

▼ Lifting Hook

Cod. 19100

Maximum load capacity 1500 Kg.

CONDOR

www.condorspa.com